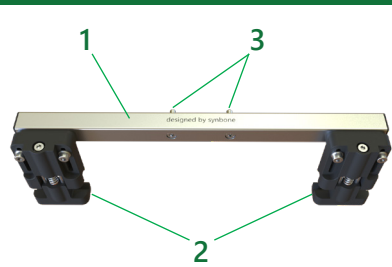


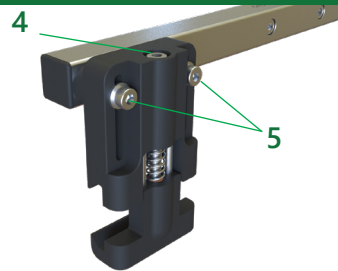
Instructions for use

ROB (Pro) Knee Holder Rail System

Product Overview



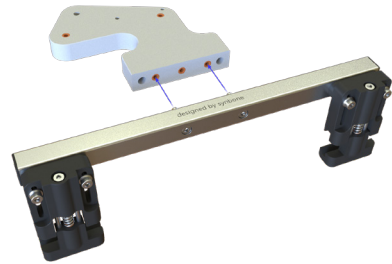
Rail Adapter components



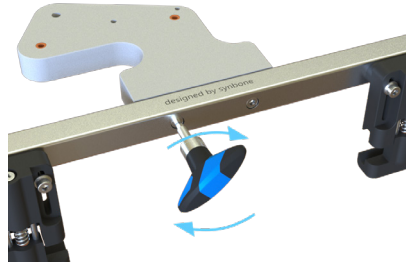
Rail Clamp components

1. Connector bar
2. Rail Clamp
3. Attachment screws
4. Clamping screw
5. Height adjustment screws

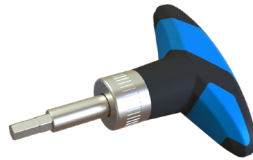
Assembling



Attach the Rail Adapter to the Base Plate...

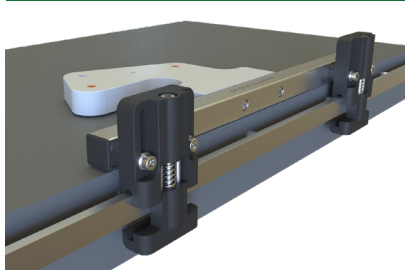


... and tighten the attachment screws (3) with the 4Nm torque wrench provided with the system

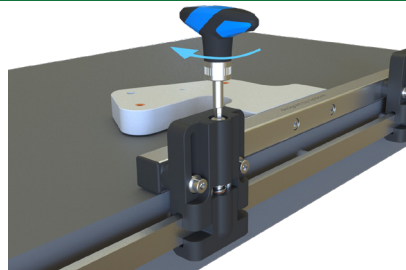


To prevent overtightening it is highly recommended to use the 4Nm torque wrench. (provided as of May 2024)

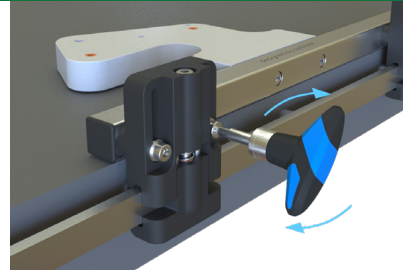
Rail Attachment



Make sure that the height adjustment screws (5) are loose and attach both Rail Clamps (2) to the rail



Tighten the clamping screw (4) until the connection to the rail is stable. Repeat the step for the second clamp



Confirm that the Base Plate is lying on the table and tighten the height adjustment screws (5) on both clamps

Failure to follow these instructions during setup, use, and disassembly may result in damage to the system. Please read and follow the instructions for optimal functionality throughout the life of the product.